

6451 Ladd Avenue

Louisville, KY 40216

www.cbre.com/louisville

2 Buildings | 32,000+/- Square Feet Each | Available Spring 2024



Property Highlights

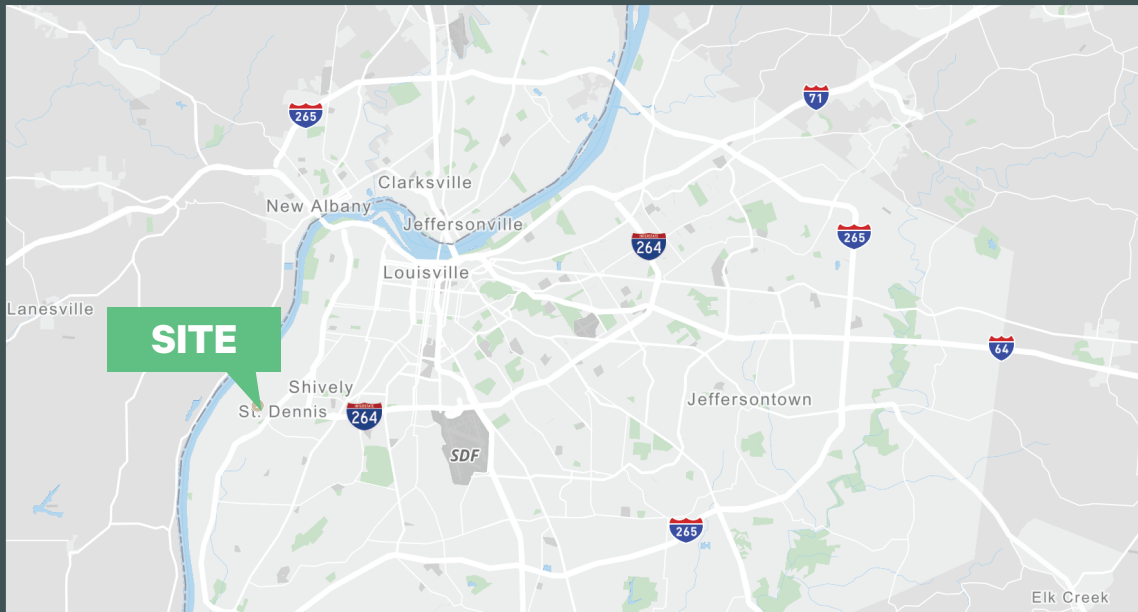
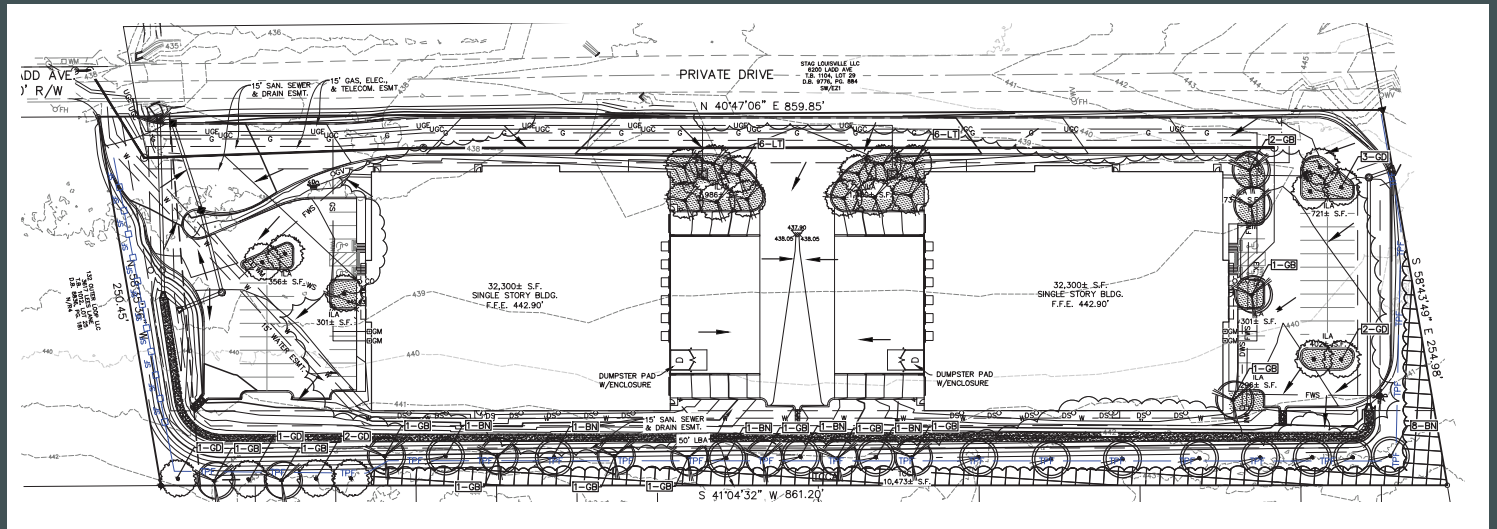
- Building 1: 32,000+/- SF
- Building 2: 32,000+/- SF
- 6 dock doors per building
- 1 drive-in door per building
- 24' clear height
- Up to 31 parking spaces
- 800 amps of power
- 3.8 miles to I-264
- 9.3 miles to I-64
- 10.4 miles to I-65

Contact Us

Doug Butcher, SIOR
Senior Vice President
+1 502 412 7641
doug.butcher@cbre.com

Alex P. Grove
Senior Associate
+1 502 412 7655
alex.grove@cbre.com

6451 Ladd Avenue
Louisville, KY



Contact Us

Doug Butcher, SIOR
Executive Vice President
+1 502 412 7641
doug.butcher@cbre.com

Alex P. Grove
Senior Associate
+1 502 412 7655
alex.grove@cbre.com

© 2023 CBRE, Inc. All rights reserved. This information has been obtained from sources believed reliable, but has not been verified for accuracy or completeness. You should conduct a careful, independent investigation of the property and verify all information. Any reliance on this information is solely at your own risk. CBRE and the CBRE logo are service marks of CBRE, Inc. All other marks displayed on this document are the property of their respective owners, and the use of such logos does not imply any affiliation with or endorsement of CBRE. Photos herein are the property of their respective owners. Use of these images without the express written consent of the owner is prohibited.