

6901 Riverport Drive, Suite A

Louisville, KY 40258

www.cbre.com/louisville

132,352+/- SF Available

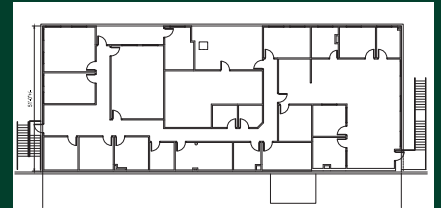


Property Features

- + 132,352+/- SF available
- + 12,758+/- SF, 2 story office
- + 24' ceiling height
- + 9 dock doors
- + T-5 fluorescent lighting
- + 50' X 50' column spacing
- + Ample, fenced car parking
- + Fenced trailer court
- + Insulated metal, steel construction
- + Direct and secured access
- + Easy access to I-65, I-264 and I-265
- + EZ-1, FTZ
- + **Contact agent for pricing**



(2nd Floor Office 6,290+/- SF)



Contact Us

Kevin A. Grove, CCIM, SIOR
Senior Vice President
+1 502 412 7615
kevin.grove@cbre.com

Alex P. Grove
Associate
+1 502 412 7655
alex.grove@cbre.com

© 2021 CBRE, Inc. All rights reserved. This information has been obtained from sources believed reliable, but has not been verified for accuracy or completeness. You should conduct a careful, independent investigation of the property and verify all information. Any reliance on this information is solely at your own risk. CBRE and the CBRE logo are service marks of CBRE, Inc. All other marks displayed on this document are the property of their respective owners, and the use of such logos does not imply any affiliation with or endorsement of CBRE. Photos herein are the property of their respective owners. Use of these images without the express written consent of the owner is prohibited.