

# Bohannon Commerce Center at Riverport 5

Louisville, KY 40258

[www.cbre.com/louisville](http://www.cbre.com/louisville)

Building 5 Now Under Construction!



## Property Highlights

- 5 buildings totalling 945,750+/- SF
  - Building 1: 244,350+/- SF (Fully Leased)
  - *Building 5: 181,800+/- SF (Under Construction)*
  - Building 2: 294,500+/- SF (Completion TBD)
  - Building 3: 90,000+/- SF (Completion TBD)
  - Building 4: 135,100+/- SF (Completion TBD)
- 106.7+/- Acres
- Build-to-Suit options available
- 2.7 miles to I-265
- 10 miles to I-264
- 13 miles to I-65
- 17 miles to I-64
- 14 miles to Ford LAP
- 14.1 miles to UPS Worldport
- Zoned EZ-1
- Contact agent for pricing

## Contact Us

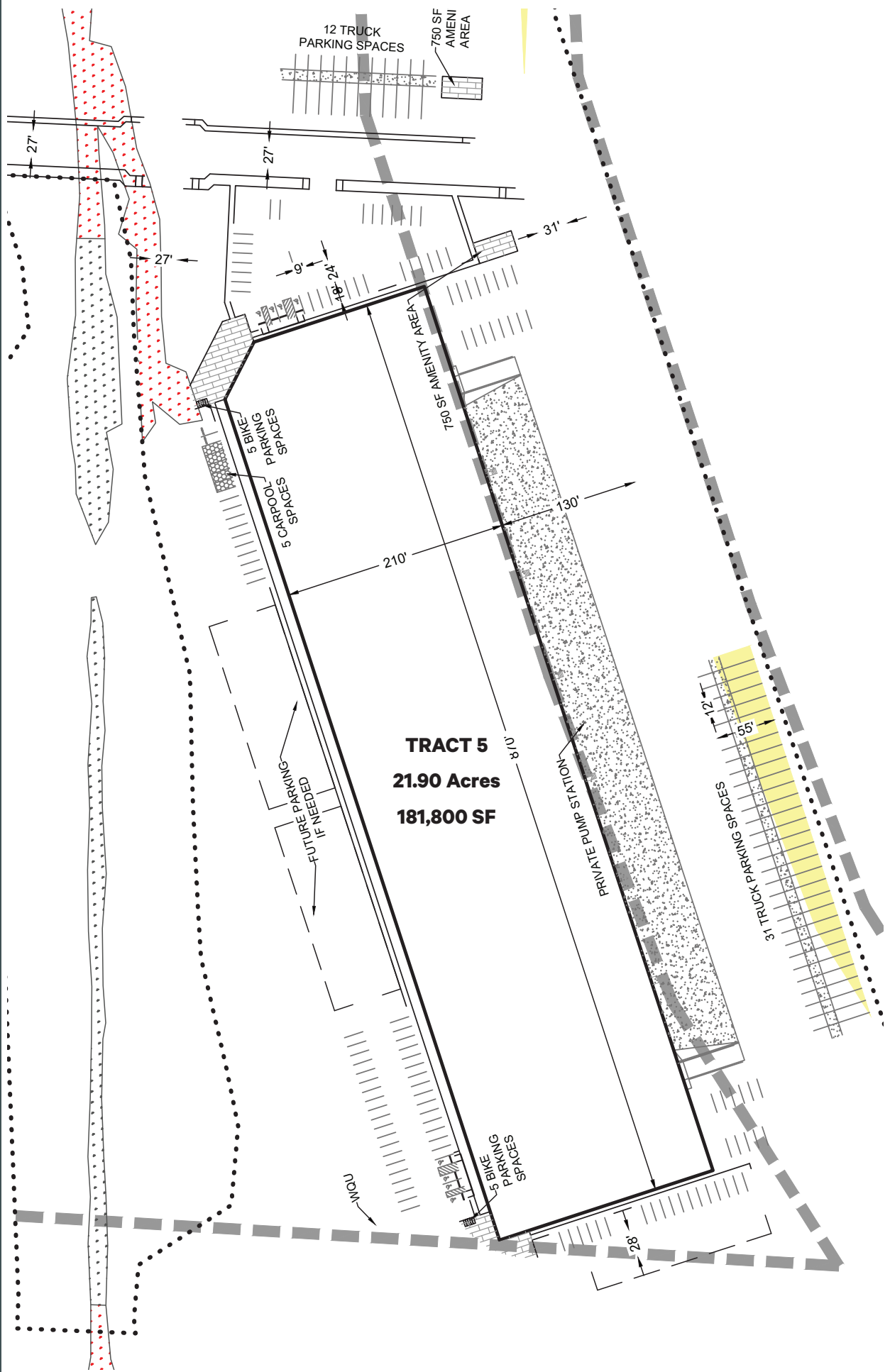
Doug Butcher, SIOR  
Executive Vice President  
+1 502 412 7641  
[doug.butcher@cbre.com](mailto:doug.butcher@cbre.com)

# Bohannon Commerce Center at Riverport 5

Louisville, KY

## BUILDING 5 SPECS

Available Space	181,800+/- square feet
Office Area	BTS
Construction Type	Concrete Tilt Wall
Clear Height	32'
Fire Suppression	ESFR
Dock Doors	(15) 9' X 10' with 35,000 lb. levelers and seals (20 additional knockouts)
Drive-In Doors	(2) 14' X 16'
Column Spacing	50' X 50'
Lighting	30 FC LED
HVAC	60 degrees at 0 outside 2 air changes per hour
Electric	3,000 amp
Roof	45 mil TPO (R-24)
Truck Court	134'
Car Parking	129 spaces
Trailer Parking	61 spaces
Slab	7"
Jurisdiction	Jefferson County
Zoning	EZ-1
Utilities	Gas: LG&E Sewer: MSD Water: Louisville Water Company Electric: LG&E



# Bohannon Commerce Center at Riverport 5

Louisville, KY

## ADDITIONAL PLANNED BUILD-TO-SUIT OPPORTUNITIES

**Building 2** 294,500+/- SF

**Building 3** 90,000+/- SF

**Building 4** 135,100+/- SF



© 2021 CBRE, Inc. All rights reserved. This information has been obtained from sources believed reliable, but has not been verified for accuracy or completeness. You should conduct a careful, independent investigation of the property and verify all information. Any reliance on this information is solely at your own risk. CBRE and the CBRE logo are service marks of CBRE, Inc. All other marks displayed on this document are the property of their respective owners, and the use of such logos does not imply any affiliation with or endorsement of CBRE. Photos herein are the property of their respective owners. Use of these images without the express written consent of the owner is prohibited.