

Delcour Industrial Phase 5

6675 Randy Coe Lane | Louisville, KY 40272

www.cbre.com/louisville

110,000-350,000+/- SF Available | Air Conditioned Warehouse



Contact Us

Alex P. Grove

Senior Associate

+1 502 412 7655

alex.grove@cbre.com

Kevin A. Grove, CCIM, SIOR

Executive Vice President

+1 502 412 7615

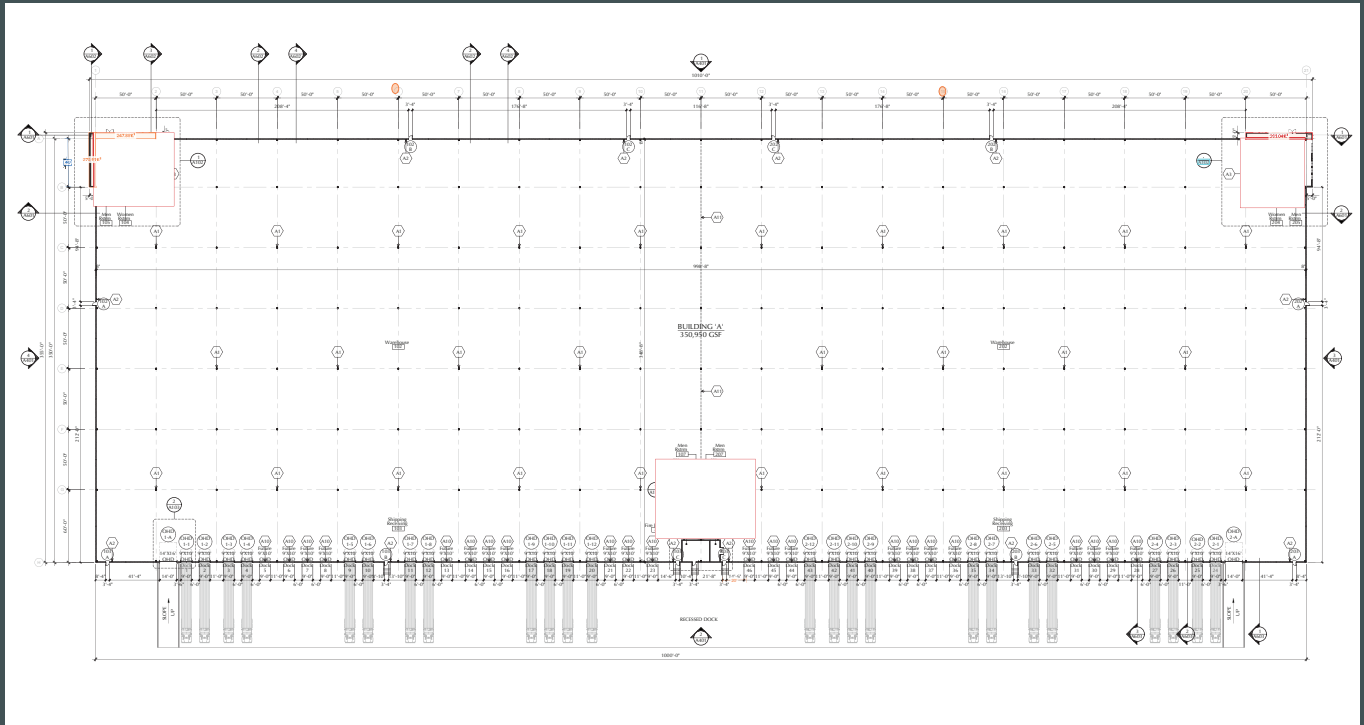
kevin.grove@cbre.com

6675 Randy Coe Lane

Louisville, KY 40272

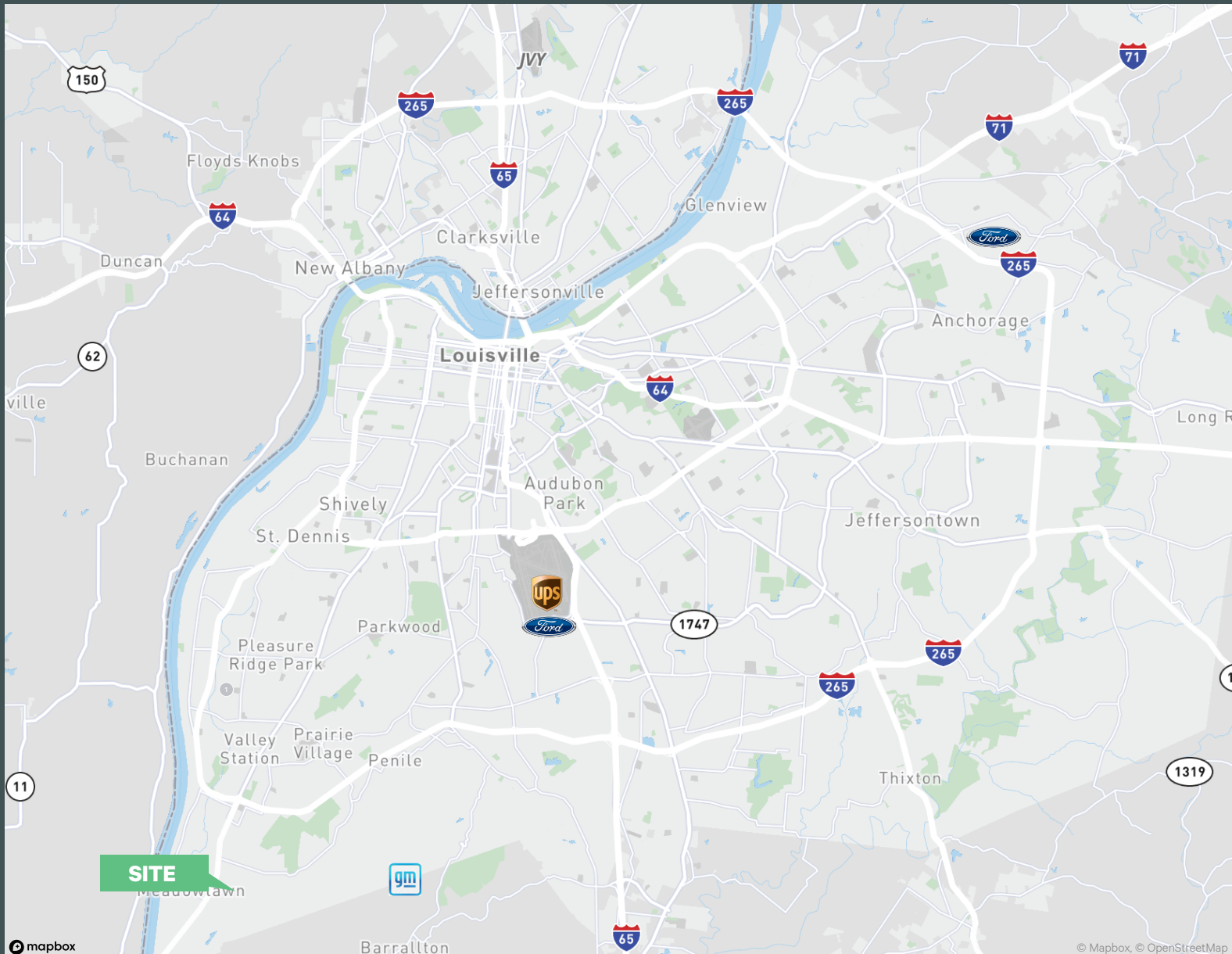
BUILDING SPECS

Available Space	Building A: 110,000-350,000+/- SF	Electric	1200 amp, 277/480 volt, 3-phase
Office Area	BTS	Roof	60 mil TPO
Construction Type	Concrete Tilt-Up	Truck Court	130'
Clear Height	36'	Car Parking	Building A: 272
Fire Suppression	ESFR	Trailer Parking	Building A: 123
Dock Doors	24 equipped dock positions	Slab	7"
Drive-In Doors	2 (14' X 16')	Jurisdiction	Jefferson County
Column Spacing	50' X 50'	Zoning	EZ-1
Lighting	LED	Utilities	Gas: LG&E Sewer: MSD Water: Louisville Water Company Electric: LG&E
HVAC	Air conditioned		



6675 Randy Coe Lane

Louisville, KY 40272



Contact Us

Alex P. Grove

Senior Associate

+1 502 412 7655

alex.grove@cbre.com

Kevin A. Grove, CCIM, SIOR

Executive Vice President

+1 502 412 7615

kevin.grove@cbre.com

© 2022 CBRE, Inc. All rights reserved. This information has been obtained from sources believed reliable, but has not been verified for accuracy or completeness. You should conduct a careful, independent investigation of the property and verify all information. Any reliance on this information is solely at your own risk. CBRE and the CBRE logo are service marks of CBRE, Inc. All other marks displayed on this document are the property of their respective owners, and the use of such logos does not imply any affiliation with or endorsement of CBRE. Photos herein are the property of their respective owners. Use of these images without the express written consent of the owner is prohibited.

www.cbre.com/louisville

CBRE